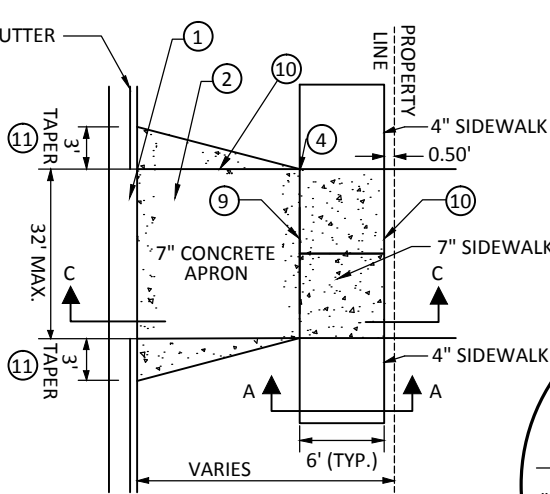
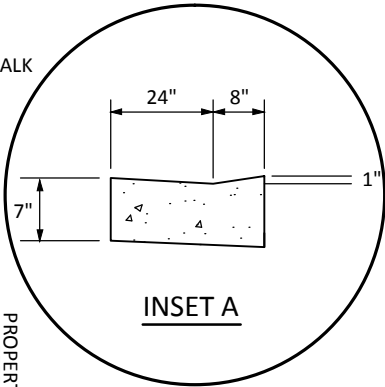


NO SIDEWALK

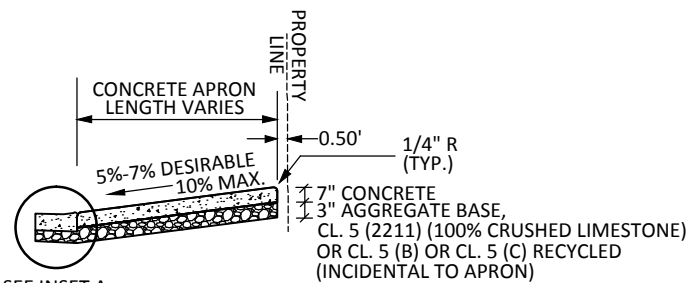


WITH SIDEWALK

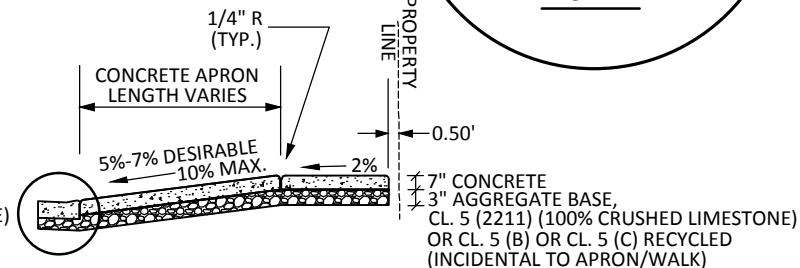
**WITH SIDEWALK
ADJACENT TO CURB
*SEE DETAIL 7020A**



INSET A



SEE INSET A



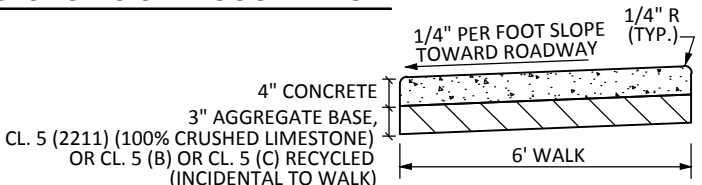
SEE INSET A

SECTION B-B THROUGH APRON

SECTION C-C THROUGH APRON

NOTES:

1. SEE "PEDESTRIAN CURB RAMP" DETAIL AND PLANS FOR PLACEMENT OF PEDESTRIAN CURB RAMP.
2. SLOPE OF DRIVEWAY TO PROPERTY LINE MAY VARY IF NO SIDEWALK IS REQUIRED.
3. MINNESOTA DEPARTMENT OF TRANSPORTATION STANDARD SPECIFICATIONS FOR CONSTRUCTION SHALL APPLY. CONCRETE MIX 3A32 WILL BE REQUIRED.
4. SIDEWALKS: REFERENCE SECTION 2521, CURB & GUTTER: REFERENCE SECTION 2531, DRIVEWAYS: REFERENCE SECTION 2531, AGGREGATE BASE: REFERENCE SECTION 2211
5. CONTRACTOR SEE PLANS FOR PLACEMENT OF WALK AND DIMENSIONS FOR CONSTRUCTION OF DRIVEWAYS.
6. 1/2" PRE FORMED JOINT FILLER MATERIAL-AASHTO M213 REQUIRED AT THE INTERSECTION OF ALL MAINLINE WALK WITH STATIONARY OBJECTS. (I.E., BUILDING FOUNDATION, EXISTING WALK, ETC.) (NOT REQUIRED WHEN CURB AND GUTTER OR WALK ARE ADJACENT TO BITUMINOUS PAVEMENT.)
7. CONCRETE DRIVEWAY PAVEMENT IS NOT TO BE POURED MONOLITHICALLY WITH CURB AND GUTTER.
8. DRIVEWAY OPENINGS SHALL BE A MAXIMUM OF 32' FROM BOTTOM OF 3' TAPER TO BOTTOM OF 3' TAPER.
9. 1/2" EXPANSION JOINT. PLACED AT 100 FT. INTERVALS FOR SIDEWALK.
10. CONTRACTION JOINT (FORMED OR SAWED)



SECTION A-A THROUGH WALK

11. IF A 6' (FT) WIDE WALK IS ADJACENT TO BACK OF CURB, THEN THE CURB TAPER SHALL BE 10' (FT) IN LENGTH. IF A WALK ADJACENT TO BACK OF CURB IS WIDER THAN 6' (FT) AND CONTAINS A MINIMUM OF 6' (FT) WALKING AREA AT 2% CROSS SLOPE, THE CURB TAPER SHALL BE 6' (FT) IN LENGTH. * SEE DETAIL 7020A
12. CONCRETE WALK CONSTRUCTION JOINTS SHALL BE TOOLED OR SAW CUT AT 6 FT. INTERVALS.

**COMMERCIAL
CONCRETE WALK AND APRON**
NOT TO SCALE
**SAINT PETER STANDARD
PLATE 7020C**

COMMERCIAL CONCRETE WALK AND APRON
APPROVED: ADOPTED BY CITY COUNCIL ON JANUARY 12, 2004
REVISED: REVISION ADOPTED BY CITY COUNCIL ON FEBRUARY 27, 2017
REMARKS:
SAINT PETER UTILITY STANDARD DETAIL

STANDARD DETAIL
PLATE NO:
7020C

**CITY OF
Saint Peter**
NICOLLET COUNTY, MINNESOTA
WHERE HISTORY & PROGRESS MEET