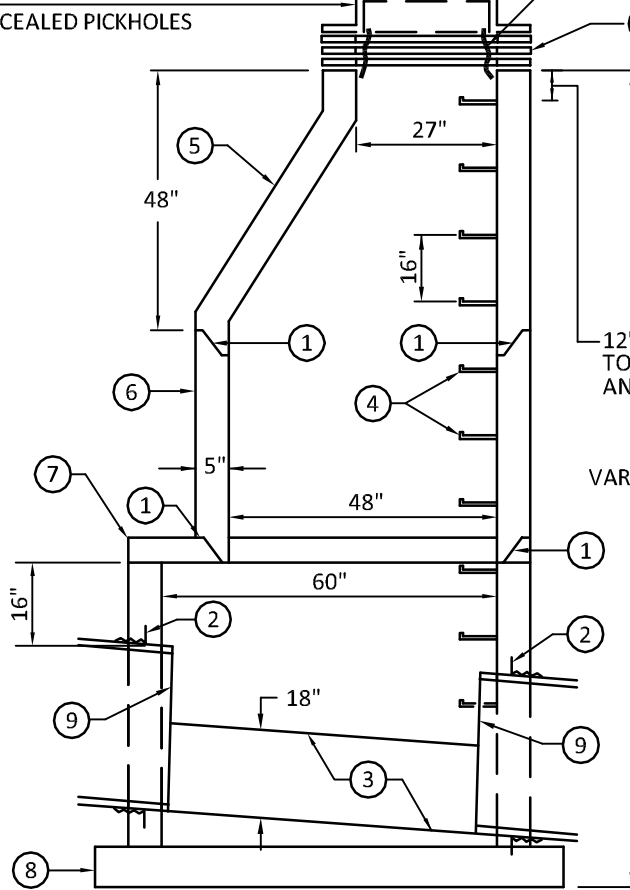


700-7 FRAME  
712 GASKETED COVER  
WITH CONCEALED PICKHOLES

PLACE INTERIOR  
CHIMNEY SEAL

- ① RUBBER GASKET
- ② FLEXIBLE WATERTIGHT SEAL TO BE APPROVED BY ENGINEER. FILL ANNULAR SPACE AROUND PIPE WITH NON-SHRINK GROUT.
- ③ SHAPE, DEPTH AND SLOPE OF INVERT TO BE APPROVED BY ENGINEER. GROUT TO BE MIX 3A34.
- ④ STEEL REINFORCED PLASTIC STEPS SHALL BE A POLYPROPYLENE PLASTIC REINFORCED WITH NO. 2 DEFORMED STEEL ROD GRADE 60
- ⑤ MN/DOT TYPE "B" ECCENTRIC PRECAST CONCRETE CONE SECTION TYPICAL FOR ALL MANHOLES.
- ⑥ 48" DIAMETER PRECAST RISER SECTIONS AS REQUIRED.
- ⑦ PRECAST SLAB WITH ECCENTRIC 48" OPENING DESIGN -HS20 PLUS EARTH LOAD
- ⑧ 80" PRECAST BASE SECTION
- ⑨ REFER TO PLANS FOR PIPE REQUIRED
- ⑩ MAXIMUM ADJUSTMENT ALLOWED BETWEEN THE TOP CONE SECTION AND BOTTOM CASTING IS 12". A MAXIMUM OF 3 INDIVIDUAL ADJUSTING RINGS SHALL BE USED. TALLER 6" OR 12" RINGS SHALL BE USED WHERE ADJUSTMENT REQUIRES MORE THAN 3 (2") RINGS.



⑩ MAXIMUM OF 3 CONCRETE ADJUSTING RINGS ALLOWED WITH NON-SHRINK GROUT PLACED BETWEEN RINGS AND PLASTERED 1/2" THICK INSIDE AND OUTSIDE OF RINGS.  
NOTE:  
IF CASTING IS SET DIRECTLY ON TOP OF CONCRETE STRUCTURE, BITUMINOUS MASTIC COMPOUND SHALL BE PLACED BETWEEN CASTING AND STRUCTURE.

12" MIN. BETWEEN TOP CONE SECTION AND FIRST STEP

VARIABLE

## SANITARY SEWER MANHOLE DESIGN SPECIAL

NOT TO SCALE  
SAINT PETER STANDARD  
PLATE 5007

# SANITARY SEWER MANHOLE DESIGN SPECIAL

STANDARD DETAIL  
PLATE NO:  
**5007**

APPROVED: ADOPTED BY CITY COUNCIL ON JANUARY 12, 2004

REVISED: REVISION ADOPTED BY CITY COUNCIL ON FEBRUARY 27, 2017

REMARKS:

## SAINT PETER UTILITY STANDARD DETAIL

