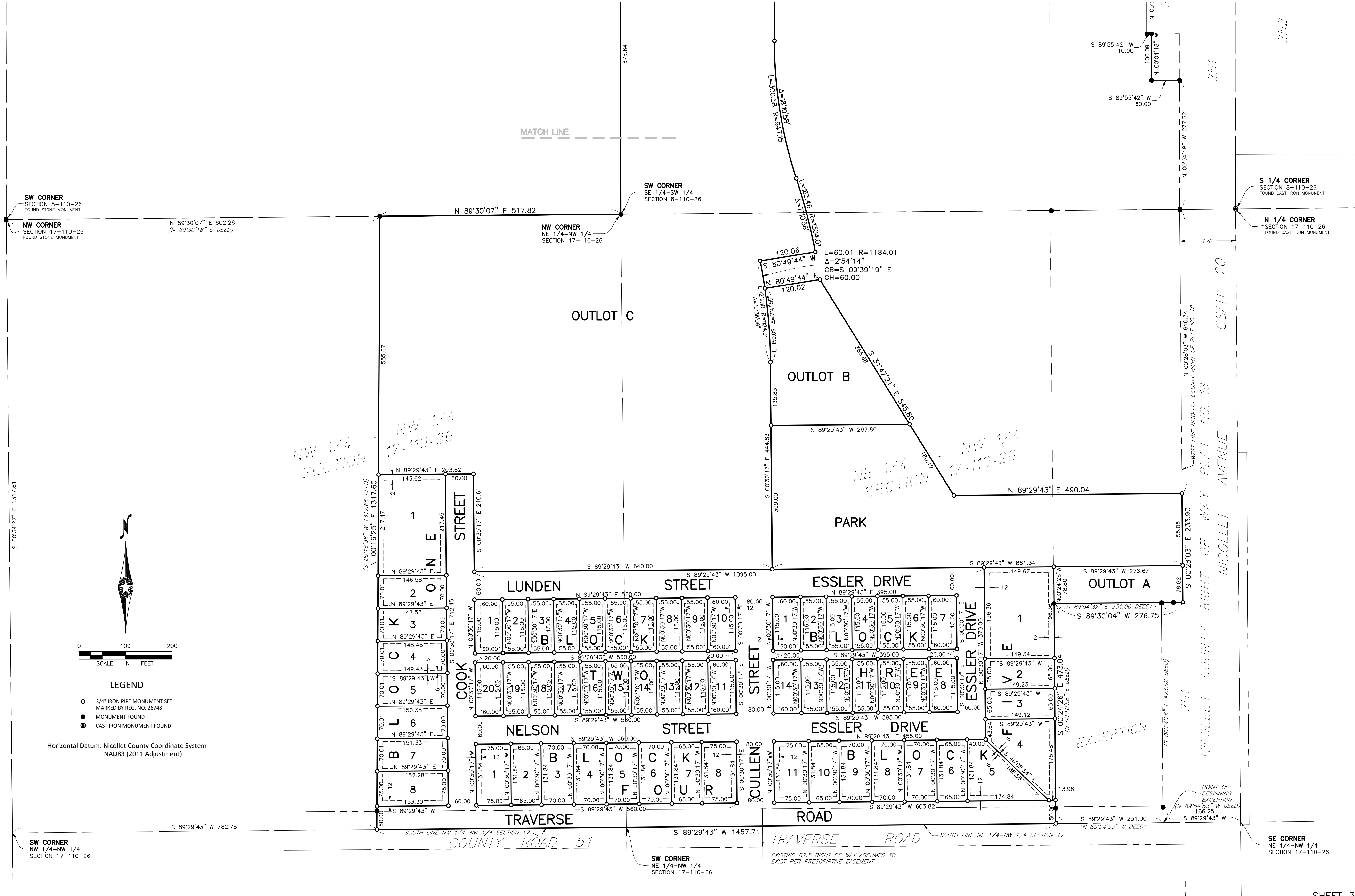


TRAVERSE GREEN SUBDIVISION

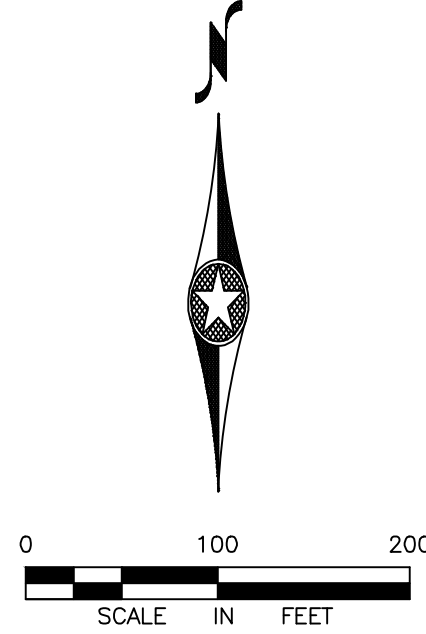


SW CORNER SECTION 8-110-26 FOUND STONE MONUMENT
 NW CORNER SECTION 17-110-26 FOUND STONE MONUMENT

N 89°30'07" E 802.28
 (N 89°30'18" E DEED)

NW CORNER NE 1/4-NW 1/4 SECTION 17-110-26
 NW CORNER SE 1/4-SW 1/4 SECTION 8-110-26

S 1/4 CORNER SECTION 8-110-26 FOUND CAST IRON MONUMENT
 N 1/4 CORNER SECTION 17-110-26 FOUND CAST IRON MONUMENT



- LEGEND**
- 3/4" IRON PIPE MONUMENT SET MARKED BY REG. NO. 26748
 - MONUMENT FOUND
 - ⊙ CAST IRON MONUMENT FOUND

Horizontal Datum: Nicollet County Coordinate System NAD83 (2011 Adjustment)

SW CORNER NW 1/4-NW 1/4 SECTION 17-110-26

S 89°29'43" W 782.78

SW CORNER NE 1/4-NW 1/4 SECTION 17-110-26

SE CORNER NE 1/4-NW 1/4 SECTION 17-110-26